

WORKING NOTES: 5 – VARIATIONS – PRICING AND QUOTING.

1) OPEN THE REQUIRED ESTIMATE

Name	Status	Customer Name	Site Name	Date Created	Created By	Description	Type	Total Value
002172 VARS	Open	TESCO PLC	TESCO EXPRESS (DRICHTWICH RD)	22/04/2009	SAN LEWIS	Electrical Power Estimate	NEW/RE	13357.88
002172 REV A	Open	TESCO PLC	TESCO EXPRESS (DRICHTWICH RD)	22/04/2009	SAN LEWIS	Electrical Power Estimate	NEW/RE	13357.88
002172	Complete	TESCO PLC	TESCO EXPRESS (DRICHTWICH RD)	22/04/2009	SAN LEWIS	Electrical Power Estimate	NEW B.U.D.	2582.13
002170	Submitted	TESCO PLC	TESCO EXPRESS (DRICHTWICH RD)	15/04/2009	SAN LEWIS	Electrical New Build Estimate	NEW B.U.D.	3408.53
002169	Submitted	TESCO PLC	TESCO EXPRESS (DRICHTWICH RD)	09/04/2009	Default User	Electrical New Build Estimate	NEW B.U.D.	317.20
002168	Submitted	TESCO PLC	TESCO EXPRESS (HARVEY RD)	31/03/2009	Default User	Main Building - Apartment 2 etc etc etc	SITE INTR.	596.41
002166K	Submitted	TESCO PLC		11/02/2009	Default User		NEW B.U.D.	15446.50
002166	Open	TESCO PLC		11/02/2009	Default User		NEW B.U.D.	15419.50
002165	Submitted	ARC ENGINEERS LTD	WORCESTER COMMERCEABILITY	22/01/2009	Default User	Quote for new build	NEW B.U.D.	10206.45
002164K	Open	TESCO PLC	TESCO EXPRESS	22/01/2009	SAN LEWIS	Electrical New Build Estimate		19412.56
002164 REV A	Open	TESCO PLC	TESCO EXPRESS	22/01/2009	SAN LEWIS	Electrical New Build Estimate		19012.16
002164	Open	TESCO PLC	TESCO EXPRESS	22/01/2009	SAN LEWIS	Electrical New Build Estimate		17947.02
002163	Submitted	TESCO PLC		13/01/2009	Default User			0.00
002162	Submitted	ARC ENGINEERS LTD	MAIN OFFICES & PORTABURN NILE	23/10/2008	SAN LEWIS	Electrical New Build Estimate		0.00
002161	Submitted	OFS	MOREGATE	21/10/2008	SAN LEWIS	Electrical New Build Estimate		7962.00
002160 REV A REV	Submitted	WALSH COUNTY COUNCIL	3000000000000	16/10/2008	SAN LEWIS	Electrical New Build Estimate	NEW B.U.D.	50299.26
002160 REV A	Submitted	WALSH COUNTY COUNCIL	KINGS CROSS	16/10/2008	SAN LEWIS	Order CDMS	NEW B.U.D.	2006.44
002160	Submitted	SAN LONDON	KINGS CROSS	16/10/2008	SAN LEWIS	Electrical New Build Estimate	NEW B.U.D.	25496.66
002159 REV A	Open	WALSALL COUNTY COUNCIL	ST MARKS P. 5.	15/10/2008	SAN LEWIS	Electrical Power Estimate		10956.37
002159	Open	WALSALL COUNTY COUNCIL	ST MARKS P. 5.	15/10/2008	SAN LEWIS	Electrical Power Estimate		9551.50
002158	Open	TESCO PLC	TESCO PLC (ST. PETERS)	16/10/2008	SAN LEWIS	Electrical Power Estimate		2945.44
002157K	Open	S D-C CONSTRUCTION	PETERBOROUGH LINE	07/10/2008	SAN LEWIS	Electrical New Build Estimate	NEW B.U.D.	74009.43
002157	Open	S D-C CONSTRUCTION	PETERBOROUGH LINE	07/10/2008	SAN LEWIS	Electrical New Build Estimate	NEW B.U.D.	85066.77
002156	Submitted	WATES	MANCHESTER	06/10/2008	SAN LEWIS	Electrical Power Estimate	NEW/RE	114725.95

2) CLICK ON **SAVE AS. ...** GIVE IT AN (OBVIOUS) EXTENDED NAME...

Estimate Save As

Save As: 002172 VARS

Expand Kits:

Buttons: Cancel, Save

Save As Progress: \_\_\_\_\_

3) OPEN THE NEW ESTIMATE AND GO TO THE **SECTIONS SCREEN**:

Section Name	Complete
WIRING & ESTIMATION	True
WIRING DISTRIBUTION	True
SMALL POWER	True
1ST FLOOR	True
BOLDER ROOM	True
2ND FLOOR	True
LIGHTING	True
LIGHTING - EMERGENCY	True
LIGHTING - GENERAL	True
CONTAINMENT	True
PREINSTALLATION	True

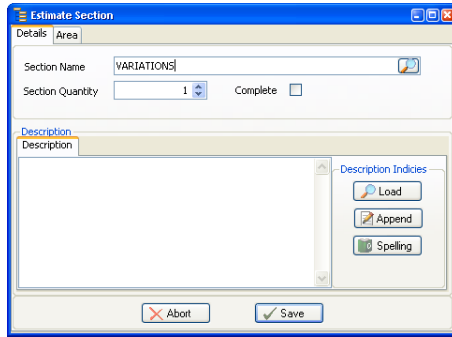
	Net	Estal
Material	51,885.25	11,834,884
Plant	6.88	6.88
Other	6.88	6.88
Subcontract	25,888.88	27,619.81
<b>Use Total</b>	<b>83,687.89</b>	<b>118,548.84</b>

Graph View: Sections or Profit

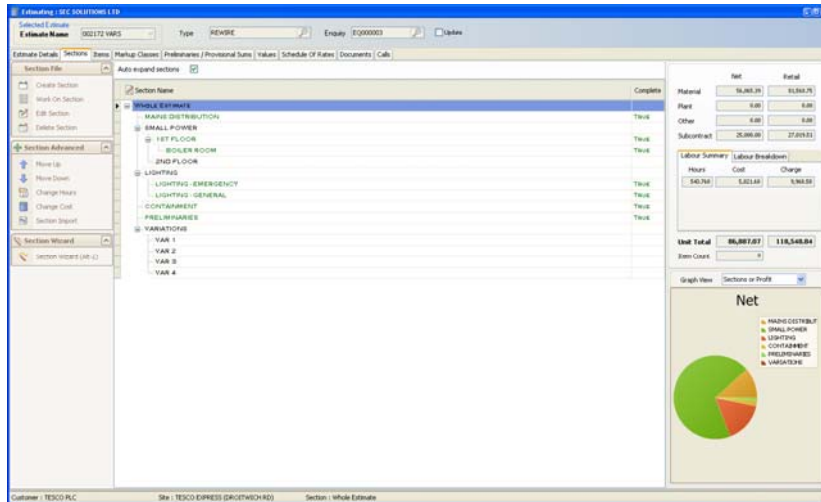
Net

Legend: WIRING & ESTIMATION, SMALL POWER, LIGHTING, CONTAINMENT, PREINSTALLATION

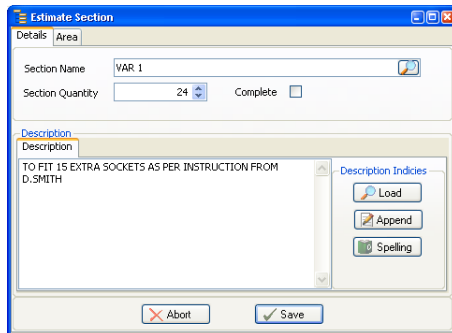
- 4) HIGHLIGHT **WHOLE ESTIMATE** AND CLICK ON **CREATE SECTION** FROM THE MENU ON THE LEFT
- 5) ENTER A SECTION NAME (I.E. VARIATIONS):



- 6) CREATE **SUB SECTIONS** FOR EACH NEW VARIATION;



- 7) FOR A PROFESSIONAL FINISH **EDIT** THE SUB SECTIONS AND TYPE IN DETAILS OF THE WORK;



*(YOU CAN ENTER THE QUANTITY HERE OR USE THE ITEM QUANTITY IN THE VARIATION ITSELF)*

- 8) *WORK ON THE SUB SECTION AND EITHER **COPY** AND **PASTE** ITEMS FORM OTHER SECTIONS IN THE ESTIMATE (KEEPS PRICES THE SAME IF SCHEDULE IS **LOCKED**) ...OR TAKE OFF IN THE NORMAL MANNER.*

9) HIGHLIGHT THE SUB SECTION TO PRINT FROM THE **SCHEDULE OF RATES** TAB:

Description	Schedule Quantity	Unit	Total
PROVISIONAL SUMS			
CAR PARK LIGHTING		18,000.00	18,000.00
WHOLE ESTIMATE		118,064.28	118,064.28
MAIN DISTRIBUTION		10,816.81	10,816.81
SUB CONTRACT INSTALL DIST BOARDS	1	10,816.81	10,816.81
SMALL POWER		7981.948	7981.948
LIGHTING		28,004.82	28,004.82
LIGHTING - EMERGENCY		14,608.06	14,608.06
LIGHTING - GENERAL		10,077.83	10,077.83
COMPARTMENT		3,076.18	3,076.18
SALA WGSB2C 750FS CABLE TRUNKING2WO COMPARTMENT	50	21.67	1,083.50
SALA WGSB3C TRUNKING 750FSMM	40	24.00	960.00
SALA WGSB3C TRUNKING 750FSMM GLV	10	18.00	180.00
SALA WGSB4B RACK 750FSMM GLV	8	19.20	153.60
SALA WGSB4C 750FS REDUCENTWO COMPARTMENT	8	18.20	145.60
SALA WGSB4C 750FS REDUCENTHREE COMPARTMENT	10	29.10	291.00
SALA WGSB4D END FLAT GUES 750FSMM GLV	13	11.91	154.83
SALA WGSB4L2C 750FS TOP LID MODS BEND-GUSSETH...	8	20.82	166.56
SALA WGSB4L3C 750FS TOP LID MODS BEND-GUSSETH...	8	22.94	183.52
SALA WGSB4L3C	8	23.43	187.44
SALA WGSB4G TEE FLAT GUES 750FSMM GLV	12	13.82	165.84
PRELIMINARIES		820.74	820.74
SITE COSTS (PRELIM)	1	121.75	121.75
DRAWINGS (PRELIM)	1	212.00	212.00
0.8 M MANUALS (PRELIM)	1	486.99	486.99
VARIATIONS		395.40	395.40
VAR 1		14.85	356.40
VAR 2		0.00	0.00
VAR 3		0.00	0.00
VAR 4		0.00	0.00

10) CLICK ON **SELECT REPORT** FROM THE LEFT HAND MENU OPTION AND SELECT:  
\* **SCHEDULE OF RATES SECTION**.

Report Generator

User Name: GUEST

Category: Estimate

Selected Report: Schedule Of Rates Section

Buttons: Print, Preview, eMail, Design

11) THE SATNADARD PRINT OUT WILL LOOK SOMETHING LIKE THIS:

Page 1 of 1

**VARIATION QUOTATION** SEC SOLUTIONS LTD

Phone: 01483 648882  
Fax: 01483 641071  
Email: enquiries@secsol.co.uk  
Web: www.sec-solutions.co.uk

Estimate No.: 002172 VARS Site Name: VAR 1

Section Name	Quantity	Unit	Total
VAR 1	24	14.85	356.40

Quantity	Measure	Description	Unit	Total
1		24 UNIT TO EXISTING SOCKETS AS PER INST/SECTION PRICES QUOTED		
		MC20 5W/5K1 FL	14.85	356.40